

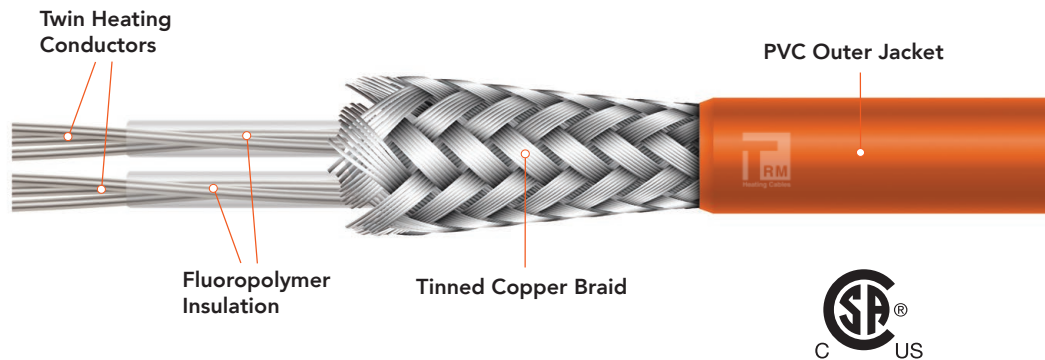


# TRM ELECTRIC FLOOR HEATING CABLE

## FOR UNCOUPLING MEMBRANE SYSTEMS

### KEY FEATURES

- ✓ EFFICIENT HEATING
- ✓ WIDE RANGE OF AVAILABLE SIZES
- ✓ COMPATIBLE WITH MOST FLOORING SURFACES
- ✓ IDEAL FOR COMFORT HEATING



### DESCRIPTION

When you're looking to provide that feeling of comfort to your customers while giving them an innovative and energy-efficient heating technology and thermostat – make sure you choose TRM Heating Cables for a quality floor heating system you can rely on.

Whether for your latest home renovation project or new construction, TRM Electric floor heating systems are suitable for a wide range of interior heating applications.

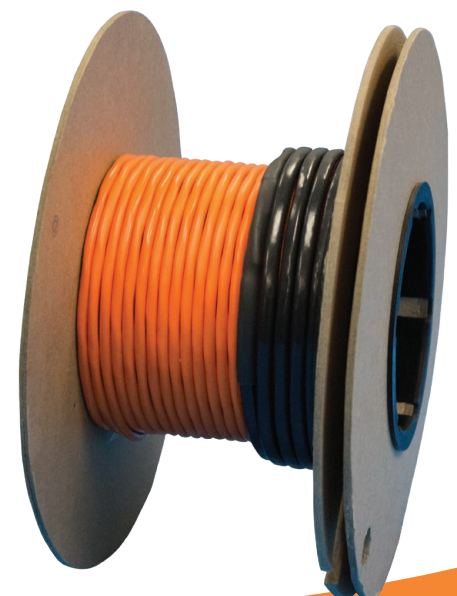
Combine with our uncoupling membrane system, to realize the benefits of an underlayment membrane with the comfort and convenience of electric floor heating. The membrane can be installed over the entire subfloor as an uncoupling,

crack isolating and waterproofing system. The TRM floor heating cable can then be installed in the areas where heat is desired. Once the TRM Heating Cable is installed you can begin tiling immediately, no waiting is necessary.

The membrane is a polypropylene uncoupling, crack isolation, waterproofing membrane, with rounded square shaped reliefs. These reliefs form a channel specially designed to embed and hold the TRM Heating Cables.

The TRM heating cable is a PVC jacketed, 2 conductor, constant wattage floor heating cable, sized especially to fit into our membrane system. A comprehensive selection of sizes are available.

TECHNICAL SPECIFICATIONS	
Cable Construction	PVC jacket, braided ground, with outer jacket, 2 conductor
Voltage	120V, 208/240V
Wattage per foot	3.7 watts per foot of cable
Watts per sq foot	10 / 12 / 15 watts per sq foot
Temperature ratings	5 deg C to 30 deg C installation temperatures
Cold Lead Cable	2 conductor, 10 foot long lead



## TRM FLOOR HEATING CABLE 120 V

MODEL #	SQUARE FEET COVERED		WATTS	AMPS	LENGTH (FEET)
	AT 3 PILLARS *	AT 2/3/2 PILLARS **			
TRM-FH-1-10	10.5	8	120	1	33
TRM-FH-1-15	15.7	12	180	1.5	49.5
TRM-FH-1-26	26.2	20	300	2.5	82.5
TRM-FH-1-31	31.4	24.1	360	3	99
TRM-FH-1-42	41.9	32.1	480	4	132
TRM-FH-1-52	52.4	40.1	600	5	165
TRM-FH-1-63	62.9	48.1	720	6	198
TRM-FH-1-73	73.3	56.1	840	7	231
TRM-FH-1-84	83.8	64.2	960	8	264
TRM-FH-1-94	94.3	72.2	1080	9	297
TRM-FH-1-105	104.8	80.2	1200	10	330
TRM-FH-1-115	115.3	88.2	1320	11	363
TRM-FH-1-125	125.7	96.3	1440	12	396

\* Standard spacing = 3 Pillars, to achieve 12 watts per sq. ft.

\*\* Alternative spacing = 2/3/2 Pillars, to achieve 15 watts per sq. ft.

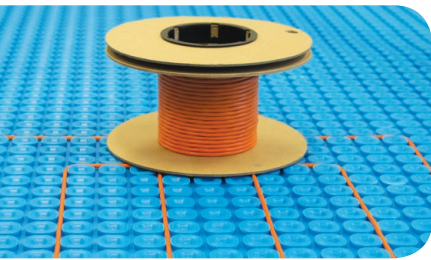
**Note:** use 3/4 Pillar spacing to achieve 10 watts per sq. ft.

These pillar spacings above are based on utilizing membrane supplied by TRM.

Please contact TRM for alternative design options.

## TRM FLOOR HEATING CABLE 240 V

MODEL #	SQUARE FEET COVERED		WATTS	AMPS	LENGTH (FEET)
	AT 3 PILLARS *	AT 2/3/2 PILLARS **			
TRM-FH-2-15	15.7	12	180	0.75	49.5
TRM-FH-2-21	21	16	240	1	66
TRM-FH-2-26	26.2	20.1	300	1.25	82.5
TRM-FH-2-36	36.7	28.1	420	1.75	115.5
TRM-FH-2-47	47.1	36.1	540	2.25	148.5
TRM-FH-2-63	62.9	48.1	720	3	198
TRM-FH-2-73	73.3	56.1	840	3.5	231
TRM-FH-2-84	83.8	64.2	960	4	264
TRM-FH-2-94	94.3	72.2	1080	4.5	297
TRM-FH-2-105	104.8	80.2	1200	5	330
TRM-FH-2-125	125.7	96.3	1440	6	396
TRM-FH-2-146	146.7	112.3	1680	7	462
TRM-FH-2-167	167.6	128.3	1920	8	528
TRM-FH-2-188	188.6	144.4	2160	9	594
TRM-FH-2-210	209.6	160.4	2400	10	660
TRM-FH-2-230	230.5	176.5	2640	11	726
TRM-FH-2-250	251.5	192.5	2880	12	792



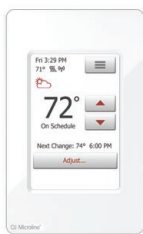
## MEMBRANE SPECIFICATIONS

THICKNESS 0.22" / 5.5mm

PART #	DESCRIPTION
TRM-Mem-Large	161 Square foot roll (3'3" x 49'2.5")
TRM-Mem-Small	54 Square foot roll (3'3" x 16'4.75")
TRM-Mem-Sheet	10.6 Square feet each (39" x 39" sheet)

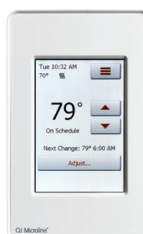


## TRM FLOOR HEATING THERMOSTATS



**TRM-FH-GOLD**  
(UWG4-4999)

- Wifi Enabled
- 3.5" Color touchscreen with interactive control
- Full programmability
- Tracks power consumption
- 120 Volt and 240 Volt dual voltage
- Complete with GFCI protection



**TRM-FH-SILVER**  
(UDG4-4999)

- 3.5" Color touchscreen with interactive control
- Full programmability
- Tracks power consumption
- 120 Volt and 240 Volt dual voltage
- Complete with GFCI protection



**TRM-FH-BRONZE**  
(UTN4-4999)

- Non-programmable
- Tracks power consumption
- 120 Volt and 240 Volt dual voltage
- Complete with GFCI protection



## WARRANTY

We believe in the superior quality of all of our TRM floor heating products. That's why we offer a **25 year warranty** to cover all potential product defects, when installed by a certified professional, and a 3 year warranty on all TRM thermostats.

TRM is a Canadian-owned leading designer, and manufacturer of premium heating cable and systems in the commercial, industrial, and residential sectors.

GET IN TOUCH 905 940 4737 [info@trmheatingcables.com](mailto:info@trmheatingcables.com) [www.trmheatingcables.com](http://www.trmheatingcables.com)

